

Case Study:
Incorporating CDFA BMP's
at a restoration nursery

Dec. 2nd, 2014

~California Native Nursery Network~

The Saga Continues

Diana Benner

May 18th, 2017

~Phytophthoras in Native Habitats

Working Group~

THE WATERSHED NURSERY

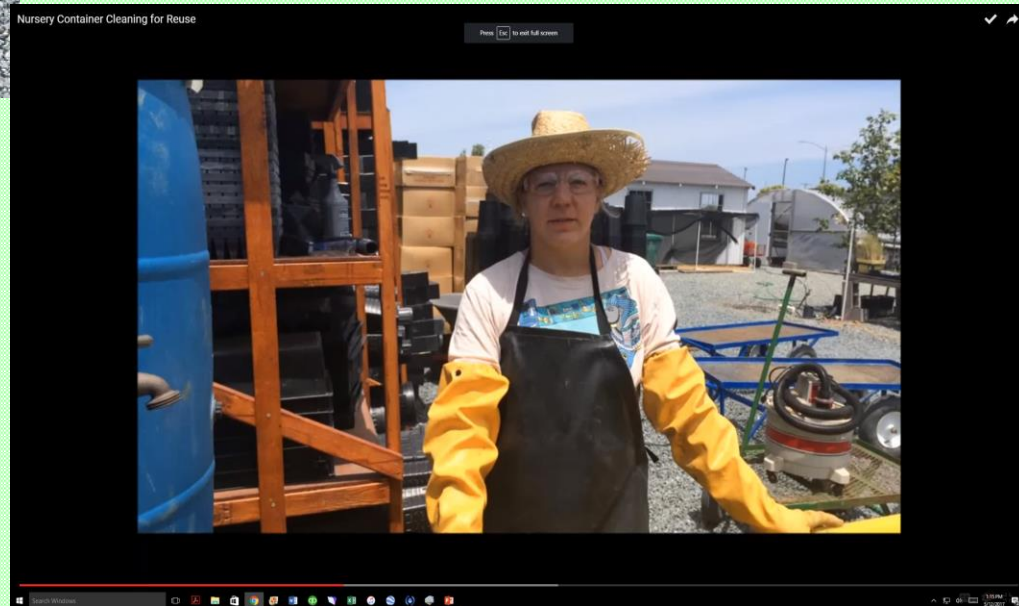


Container washing



“The Watershed Nursery container”

<https://www.youtube.com/watch?v=DWJiGpglWig&t=16s>



- Which method
 - Concerns with chemicals
 - Safety equipment
 - Staff/Volunteers
 - Disposal

Heat Treatment of Potting Media

Pro-Grow Electric Soil Sterilizers



Electricity limitations

Steam Generator



\$\$\$\$\$ limitations

Engineer

IBM

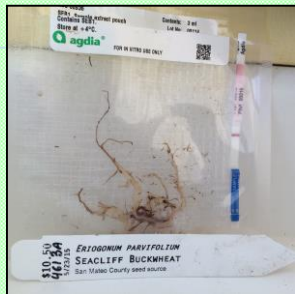




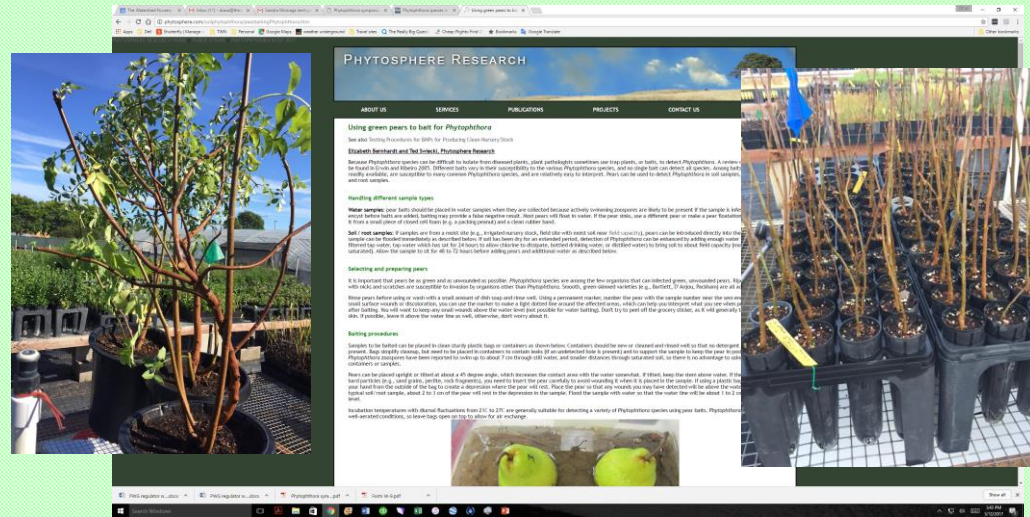
You tube video available: Affordable soil heat treating system

Testing Plant Material

- Agdia Strips
 - 1 plant at a time
 - Cross reacts with Pythiums



Effluent Whole Pear Baiting

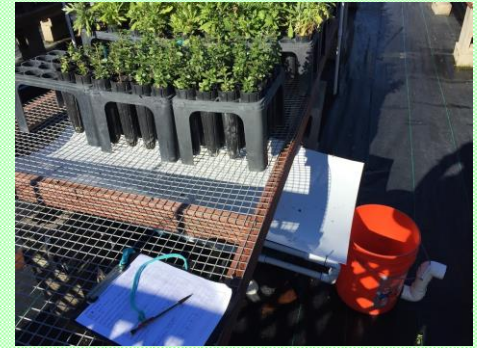
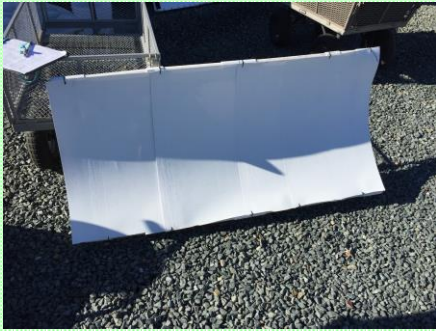


“Because *Phytophthora* species can be difficult to isolate from diseased plants, plant pathologists sometimes use trap plants, or baits, to detect *Phytophthora*.

- Different baits vary in their susceptibility to the various *Phytophthora* species, and no single bait can detect all species.
- Among baits, green pears are readily available, are susceptible to many common *Phytophthora* species, and are relatively easy to interpret.” Phytophthora

Plus!

- Can test multiple plants at the same time
- Symptoms of *Phytophthora* spp. and *Pythium* spp. different



No video, go to:
photosphere.com



To-do's or 'Wish List'

- Easier heat-treated media
- Develop protocol for testing of project plants, ie. % of plants, focus on particular species? Vary testing intensity by destination of plants?.....
- Better understanding of these organisms to help refine BMPs
- Find healthy balance





Thank you!

The Watershed Nursery

601 A Canal Blvd

Pt. Richmond, Ca. 94804

www.thewatershednursery.com