

Rhododendron Symptoms: *Phytophthora ramorum* Positive



Rhododendron ‘Todmorden’ *Steve Tjosvold, UC Cooperative Extension*

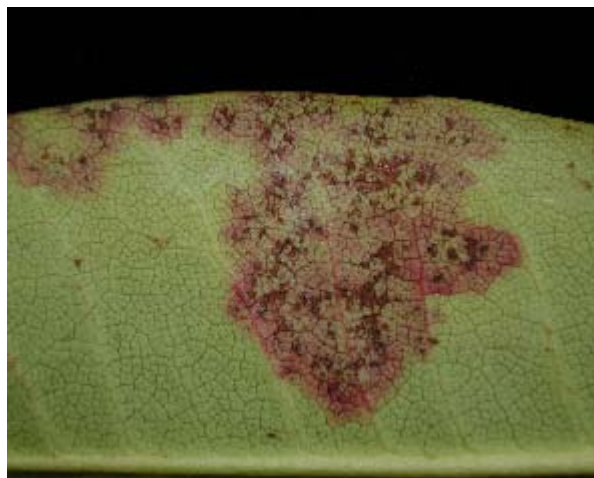


Stem dieback in rhododendron *BBA, Germany*



Rhododendron ‘Nancy Evans’ *Tjosvold*

Rhododendron Symptoms: *Phytophthora ramorum* Negative



*Images by Steve Tjosvold,
University of California Cooperative Extension*