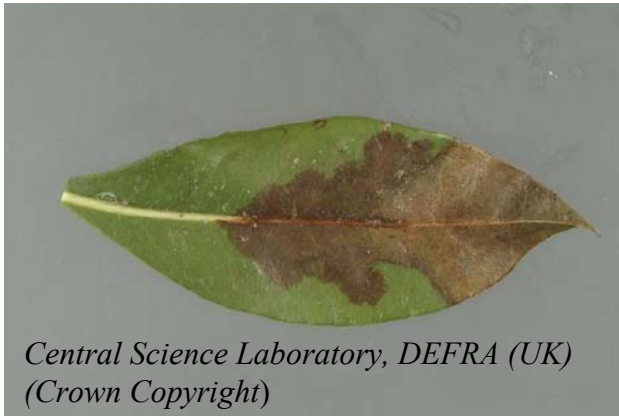


Ornamental hosts of *Phytophthora ramorum* found infected only in the UK

Kalmia latifolia leaf infections



Leucothoe fontanesiana 'Rainbow'
leaf infection



Central
Science
Laboratory,
DEFRA
(UK)
(Crown
Copyright)

Syringa vulgaris leaf and bud infections



Alexandra Schlenzig, Scottish Agricultural Science Agency