

2009 Summary Report for Sudden Oak Death Activity in Curry County, Oregon

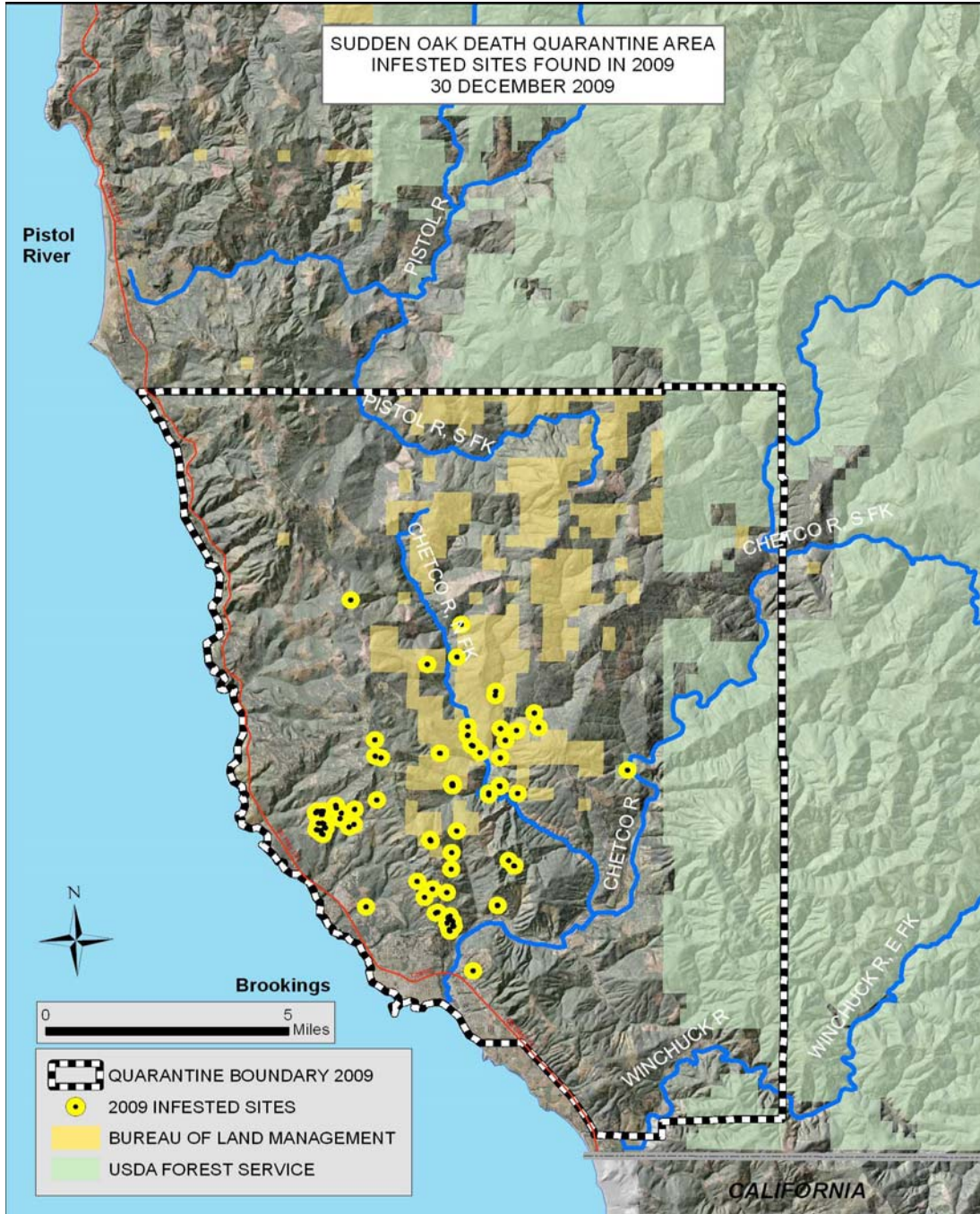


Figure 1. Location of sites infested with *Phytophthora ramorum* in southwest Oregon that were discovered on 2009. Sites enlarged by a 1000 ft radius yellow halo for visibility. White dashed line indicates quarantine area.

Figure 2. Number of Infected trees and Area Infested
2001-2009

Acres or Trees

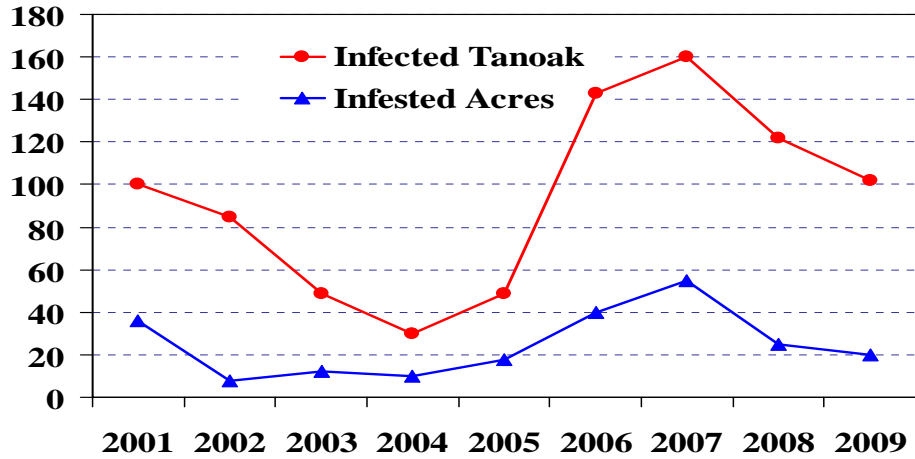


Figure 2. Trend in number of new infected trees and area of new infestations in southern Curry County, Oregon, 2001-2009.

Figure 3. Number of Infested Sites
2001-2009

New Infested Sites

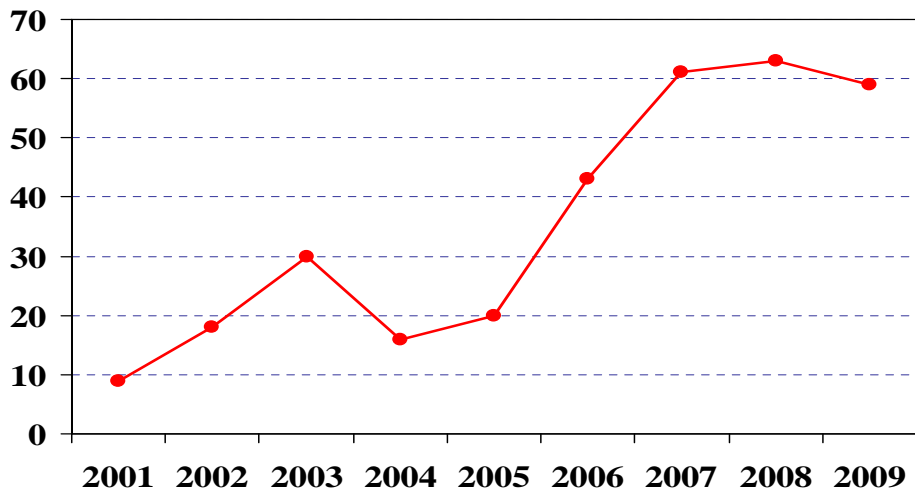


Figure 3. Trend in number of new infested sites detected each year.

Figure 4. Area of Eradication Treatments
2001-2009

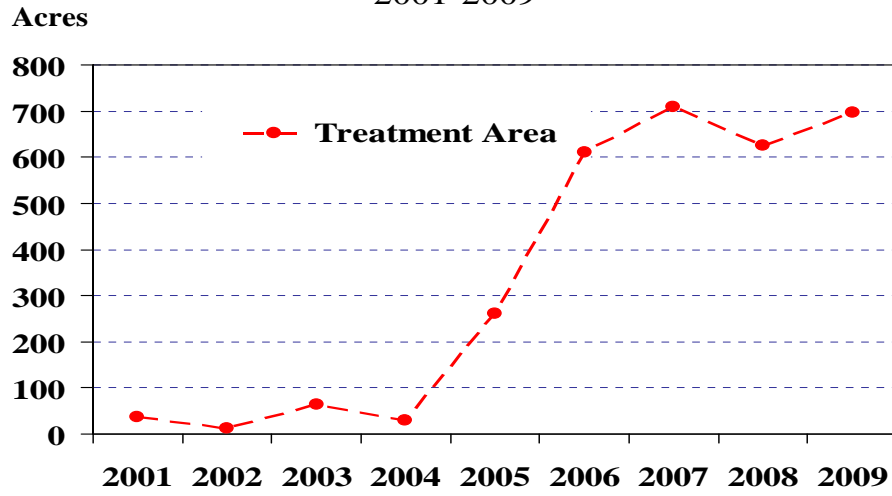


Figure 4. Area identified for treatment each year; includes hack & squirt, cut, and burn. Many 2009 sites untreated as of 12-31-09 due to funding delays.